



# 1812 PLUS SERIES TELEPHONE ENTRY + ACCESS CONTROL SYSTEMS

## • RESIDENTIAL • MULTI-FAMILY



flush mount

wall mount

surface mount curved

- Unique communication and access control system allows homeowners to use their telephone as an intercom to speak to a guest at a front door or gate
- System connects directly to the homeowners existing telephone line. No additional monthly expenses for a separate telephone line
- Access Plus model is IP addressable and allows homeowners to program the system directly from their PC
- Built-in call waiting assures that incoming or guest calls are not missed
- 2 year limited factory warranty



**grant guest access**  
by pressing 9 on the telephone



**full duplex**  
Hi quality communication – the same standard that the phone company uses



**additional**  
access point control with keypads, card readers or RF receiver



**pc programmable**  
Program the 1812 Access Plus from your PC

## ACCESS CONTROL SOLUTIONS

# RESIDENTIAL APPLICATIONS



surface mount



wall mount



flush mount



surface mount curved

four case styles to choose from

## 1812 Plus

The 1812 Plus is a unique communication and access control system that allows homeowners to use their existing telephone as an intercom to speak with a guest at a door or gate and is ideal for those applications requiring a basic, single door or gate, access control solution.

- Connects directly to your existing C.O. (Central Office) phone line. No additional monthly expense for a separate telephone line to the entry system.
- Unique double ring identifies calls from the 1812.
- Two relays allow control of two doors or gates.
- Answer machine bypass feature allows the homeowner to call the 1812 from an off site location and "by-pass" a home answering machine to perform programming operations.
- Built-in call waiting so calls from the access system are never missed – even if you're on the phone.
- Call forwarding – never miss an access system call, even if you're away from your home. And you can even create a time zone for when you want your calls to be forwarded.
- Dial-out function provides up to 27 alternate phone numbers for the system to call.
- Do-not-disturb feature allows the homeowner to set times when the access system will not ring the house phones.
- Program up to four "hold-open" time zones to keep your door or gate open during certain times of the day.
- Program up to 50 individual five (5) digit entry codes. You can even time zone restrict certain entry codes.
- Program up to 10 temporary entry codes with start and end dates and time zone restrictions. Great for allowing service companies entry to your property.
- Special intercom programming mode allows the 1812 to be connected directly to a PBX or KSU phone system.

## 1812 Access Plus

The 1812 Access Plus includes all of the features found in the 1812 Plus and is designed for larger homes that require control of a main door or gate and up to six additional access points. Discerning homeowners will appreciate the additional programming, reporting and advanced features found in the 1812 Access Plus system.

- IP Addressable – uses TCP/IP communication to program the system from your PC via a direct connection, LAN or an Internet connection.
- Program from your PC. Intuitive, easy to use, Windows based software program included.
- Two relays on the main board control a door and gate, plus control up to six (6) additional access points with card readers, keypads or RF controls via RS-485 communication.
- 100 card/transmitter/keypad codes (50 with phone numbers; 50 access codes only).
- Control all access points from your PC. Schedule lock and unlock times and easily lock or unlock an access point with the click of your mouse.
- 500 event transaction buffer can be downloaded to your PC and provides you with a record of all events at the access point(s).
  - Setup email notification of certain events of your choice. For example, an email can be sent to you when a certain access code is used.

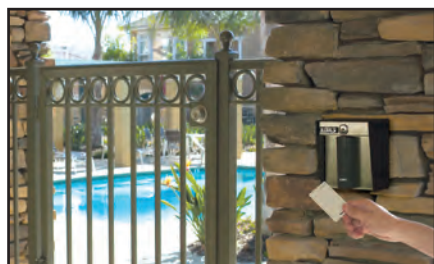




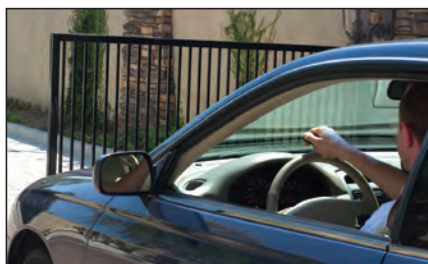
# MULTI-FAMILY APPLICATIONS



Additional accessories available for use with the 1812 Access Plus. Each uses RS-485 communication protocol.



**RS-485 Proximity Card Reader**



**RS-485 RF Receiver Assembly**  
(for use with MicroPLUS transmitters)



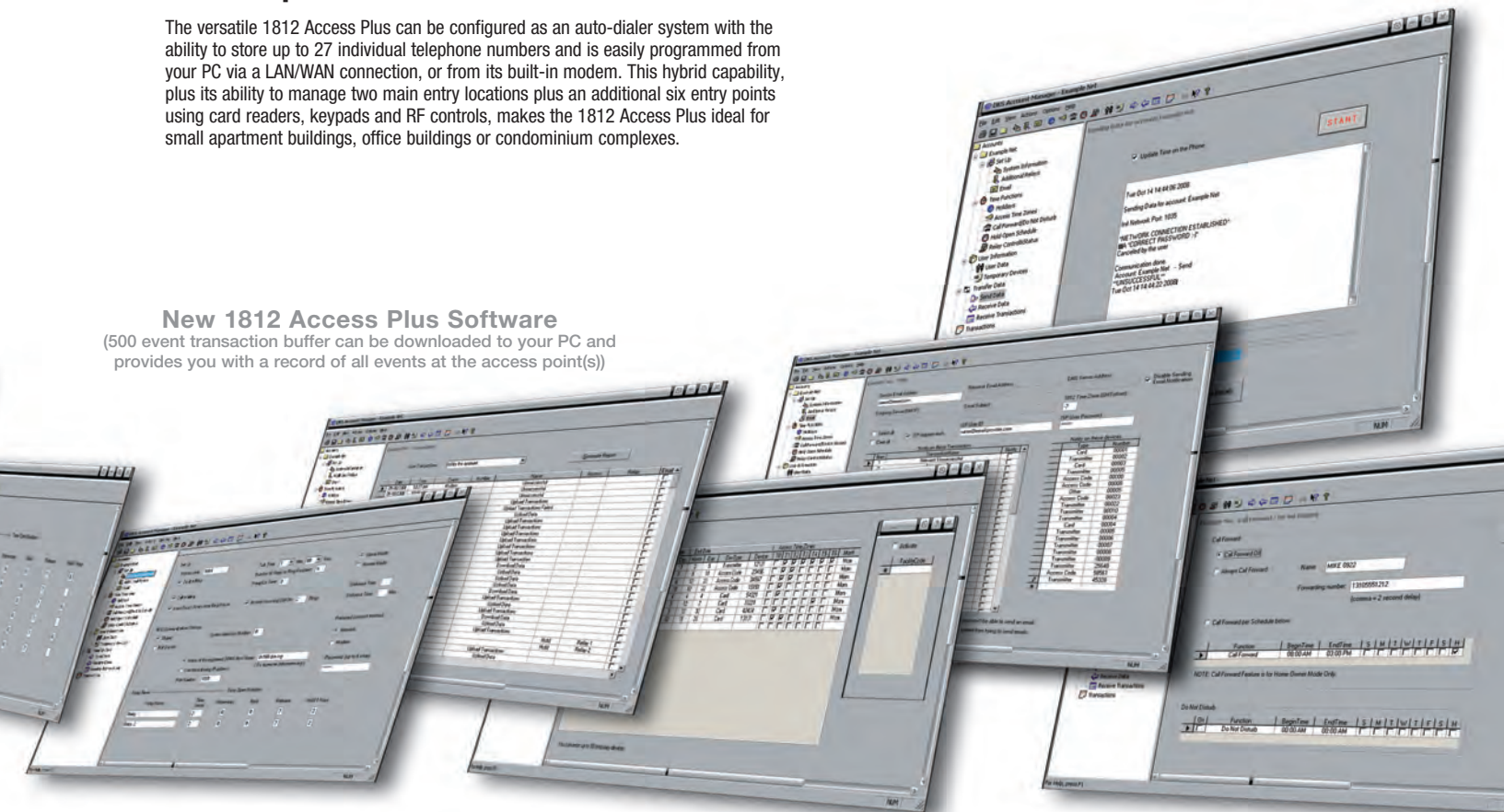
**RS-485 Keypad Assembly**

## Small Apartment/Condo

The versatile 1812 Access Plus can be configured as an auto-dialer system with the ability to store up to 27 individual telephone numbers and is easily programmed from your PC via a LAN/WAN connection, or from its built-in modem. This hybrid capability, plus its ability to manage two main entry locations plus an additional six entry points using card readers, keypads and RF controls, makes the 1812 Access Plus ideal for small apartment buildings, office buildings or condominium complexes.

### New 1812 Access Plus Software

(500 event transaction buffer can be downloaded to your PC and provides you with a record of all events at the access point(s))



# 1812 PLUS SERIES TELEPHONE ENTRY + ACCESS CONTROL SYSTEM



## Surface

10" W x 6.13" H x 5.25" D  
(254mm W x 156mm H x 133mm)

## Surface Curved

10.88" W x 7.38" H x 6" D  
(276mm W x 187mm H x 152.4mm)

## Flush

11.88" W x 9.13" H x 4.5" D  
(302mm W x 232mm H x 114mm D)

## Wall

10.75" W x 7.38" H x 3.5" D  
(273mm W x 187mm H x 88.9mm D)

1812Plus	PHONE # MEMORY	ENTRY CODES	DEVICE CODES	RELAYS	DIRECTORY	ELEVATOR CONTROL	PROGRAMMING OPTIONS	OPTIONS	TRANSACTION BUFFER
<b>Surface &amp; Flush</b>	27	50 (4-digit)	N/A	2	-	-	System Keypad	Gold Plated Faceplate	-
<b>Curved &amp; Wall</b>	27	50 (4-digit)	N/A	2	-	-	System Keypad		-

1812AP	PHONE # MEMORY	ENTRY CODES	DEVICE CODES	RELAYS	DIRECTORY	ELEVATOR CONTROL	PROGRAMMING OPTIONS	OPTIONS	TRANSACTION BUFFER
<b>Surface &amp; Flush</b>	27	50 (4-digit)	100	2 Built-in *	-	-	Computer or System Keypad	Gold Plated Faceplate	500 Events
<b>Curved &amp; Wall</b>	27	50 (4-digit)	100	2 Built-in *	-	-	Computer or System Keypad		500 Events

\* Expands to 6 with addition of RS-485 devices.

## Technical Features

### Mechanical

Stainless steel faceplate  
Galvanized steel sub-plate  
Metal keypad  
Offset speaker holes for protection  
Indoor or outdoor applications  
Enclosures are NEMA 4x rated  
Hands free  
Two relays to control two entry points  
1812 Access Plus: ability to control an additional six (6) access points with card readers, keypads or RF controls  
Interfaces with a single phone line  
Secondary keypad can be added for entry code access at a second door or gate

### Programming Methods

1812 Plus: System keypad  
1812 Access Plus: System keypad, or from PC

### Electrical

16 VAC (power transformer included)  
Full Duplex digital audio circuit  
Unique double ring  
Call waiting  
Call forwarding with time zone restrictions  
27 dial-out phone numbers  
Intercom mode for use with KSU and PBX phone systems  
50 5-digit entry codes with time zone restrictions on some codes  
Built-in clock / calendar  
Hold open time zones (4)  
Do not disturb feature  
Answer machine bypass feature

**1812 Access Plus:**  
All of the 1812 Plus features, and...

IP addressable – program from your PC via direct connection, LAN or an internet connection or via built-in modem.

Intuitive, easy to use, Windows based programming software included

Add up to six (6) card readers, keypads or RF receivers (RS-485)

100 card/transmitter/keypad codes (50 with phone numbers; 50 access codes only)

Up to 30 holidays can be added to access and hold open time zones

Control access points from your PC. Schedule lock and unlock times, lock or unlock an access point with the click of your mouse  
10 temporary access codes with start and end dates  
500 event transaction buffer  
Email notification of events of your choice. Internet connection required

### Miscellaneous

Environmental: 10°F to 145°F (-12°C to 62°C)

Camera Ready: Optional camera kits\*

\*may require additional CCTV equipment

Shipping weight approximately 15 Lbs (7 kg)



FCC (US) DUF6VT-12874-0T-0  
DOC (CAN) 1736 4507 A

Distributed by:

Access Control Solutions since 1948

### MEMBER:



### DOOR KING, INC.

120 Glasgow Avenue, Inglewood, California 90301 U.S.A.

Tel: 310-645-0023 FAX: 310-641-1586 www.doorking.com

© 2012 All Rights Reserved. Product specifications may change without notice.  
Rev. 9/12